



WINTER 2020/21



columbusequipment.com

HEAVY LIFTERS



Link-Belt
CRANES

D-CRANE RENTAL

New Link-Belt SmartFly System: SAFER, MORE EFFICIENT FLY ASSEMBLY



Erecting a fly—requiring someone to climb a ladder and multiple workers to be on the scene—is a pain point for crane operations. Link-Belt has a solution called the SmartFly system.

SmartFly is a streamlined process for fly assembly that eliminates the need to climb a ladder to install pins and erect the fly. “You can erect the fly standing on the ground using a crank or an electric impact to run the screws,” said Gary Rice, District Manager for Link-Belt. “Plus, one person can do it, whereas, on other machines, it’s at least a two-person operation.”

SmartFly’s one-person operation is particularly beneficial for taxi crane operations, he added.

The system has a simple, logical design that ensures the correct fly length is being erected or stowed. Interlocking access gates keep the fly secure and guide the operator through the steps required to pin or unpin the fly.

SmartFly was introduced on the HTC-86110 telescopic truck crane in 2015. Link-Belt has expanded the use of the technology to all cranes it has debuted since then, Rice said. The system is available on a variety of Link-Belts,

including all-terrain cranes, rough-terrain cranes, telescopic crawlers and truck cranes. All Link-Belt cranes shown at CONEXPO 2020 featured SmartFly.

“The system is very user friendly and has been very well received in the field,” Rice noted. In fact, he recently

“Customers are amazed how easy erecting the fly is with SmartFly.”

Gary Rice; District Manager, Link-Belt Cranes

demonstrated the system to a customer who had always removed the fly from their cranes because they were worried about installation. “Customers are amazed how easy erecting the fly is with SmartFly.”

The best way to understand the safe, easy operation of the SmartFly system is to see it in action. Call your Columbus Equipment Company sales rep for a demonstration of this outstanding, new safety feature. ■

New Link-Belt TCC-800 Telescopic Crawler Crane: IMPRESSIVE TECHNOLOGY, RANGE AND VERSATILITY



Link-Belt's new TCC-800 telescopic crawler crane—an 80-tonner that's replacing the groundbreaking TCC-750—is now available. The TCC-800 is an excellent choice for many applications, including pile driving, bridgework, plant work and general construction.

It's the first Link-Belt telecrawler to feature variable, side-frame track positions (or V-CALC). "V-CALC offers added flexibility to operate the crane with side frames in asymmetric configurations. The Pulse 2.0 system monitors actual side frame position and informs the operator if the proper configuration is selected," said Scott Knight, Link-Belt product manager for lattice and telescopic crawler cranes.

Between the variable, side-frame combinations and the new cab with 20 degrees of tilt, operators can choose the best configuration on any job site. Additionally, the TCC-800 chart includes a maximum 4-degree list chart for increased performance.

The crane comes with a new, four-section, full-power boom that ranges from 38 feet to 120 feet. With the full boom and optional fly, the maximum tip height is 184.5 feet.

For ease in erecting and stowing the fly, the TCC-800 is equipped with Link-Belt's new SmartFly system. SmartFly allows a single worker to pin or unpin the fly from the ground (see page 2 for more details).

The crane has a 232-hp Cummins engine that's more fuel-efficient and quieter than previous models. It also has improved cold-start capability.

The TCC-800 is an excellent choice for many applications, including pile driving, bridgework, plant work and general construction.

For better visibility during setup and lifting, the total vision package provides the operator with views from right side swing, winch and rearview cameras. Another enhancement allows operators to monitor pressure readouts for all hydraulic circuits via the Pulse 2.0 display.

The TCC-800 is easy to transport. It moves in two loads, with the main load under 100,000 lbs. and the clearance height below 13 feet.

If you need a versatile telecrawler, ask your Columbus Equipment Company sales rep how the new Link-Belt TCC-800 can best fit into your lifting operations today. ■



For additional video coverage, visit columbusequipment.com/news/videos for more on D-Crane Rental's experience.

D-Crane Rental: GROWING FLEET HANDLES EVER-EXPANDING ARRAY OF PICKS



A D-Crane operator delicately and precisely places a series of pre-cast concrete panels—weighing up to 46,000 lbs.—on a 260,000 sq. ft. commercial facility project in Jeffersonville, IN. The company's 210-ton, Link-Belt ATC-3210 is perfectly equipped for the challenge.

At D-Crane Rental, no two jobs are ever the same. One week they're putting up a new scoreboard at the Great American Ball Park in Cincinnati, and another week they're setting steel or lifting an HVAC unit.

The Walton, Kentucky-based company manages all these different jobs thanks to creative use of the 16 cranes it owns, including several Link-Belts. "We think out of the box, working with the cranes and capacity that we have," said Rob Domaschko Jr., operations manager.

"We get creative and find ways to get work accomplished with what we have. In the area we work in, there is no company that has greater capacity than we do. We want to get the work done safely, but we don't want to see contractors bring in companies from out of town. So we try to go the extra mile and get creative in ways to get the job done, as long as we can do it safely."

As an example of out-of-the-box thinking, he points to a recent project that involved demolition of a pedestrian bridge near Rupp Arena in downtown Lexington, Kentucky. D-Crane used three cranes to pick the bridge up off its piers and set it on the ground.

"We used a Link-Belt ATC-3210 on one side of the bridge and an HTC-86100 and an HTC-3140LB on the other

side. The cranes were able to pick the bridge up and boom it down away from itself to get it away from the piers and safely on the ground. It went flawlessly," he added, estimating the bridge weighed about 180,000 lbs.

D-Crane has purchased a total of nine Link-Belt cranes since 2015, including four new units.

"In the area we work in,
there is no company that has
greater capacity than we do."

Rob Domaschko Jr.; Operations Manager, D-Crane Rental

The ATC-3210 is D-Crane's newest crane, purchased in February 2019. D-Crane chose the 3210 because it has a stronger chart than other cranes in its class, Domaschko said. "We can do a lot of work that other 200-class machines can't do, so it gives us an advantage. When we do HVAC work with really heavy units, we can go out a good distance from the crane. The long main boom gives us the ability to get up and over tall buildings in downtown

Great capacity! Great reach! 2 overflow loads!

175|AT

175-Ton | 150 mt All Terrain Crane

- 42.7-197.3FT (13-60.1M) SIX SECTION PIN AND LATCH BOOM
- ALL NEW OPERATOR AND DRIVER CABS
- HIGHLY MANEUVERABLE, COMPACT 5-AXLE DESIGN
- CLASS-LEADING 15-LITER DISPLACEMENT ENGINE

Driver's cab features

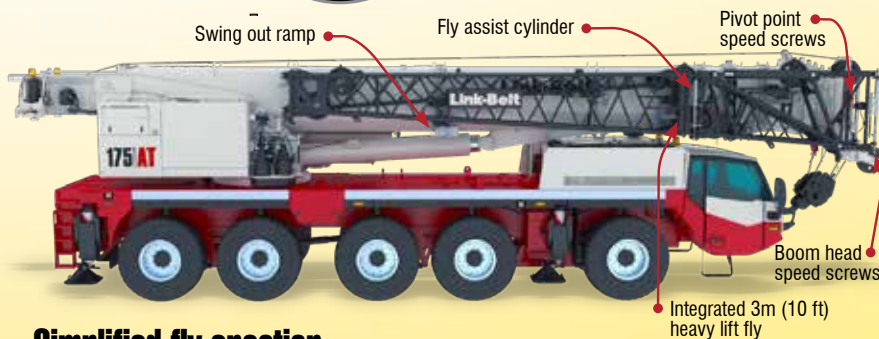
- Ergonomic, heated and ventilated air ride driver's seat with lumbar support
- Automatic climate control
- Tire pressure and temperature monitoring
- Automatic ride height adjustment
- Vision package includes left and right side cameras plus rear view cameras



- 81 V-CALC outrigger positions
- Real-time 360° charts
- Live capacity preview mode
- Outrigger position sensing
- Incorporated swing arrest

Efficient use of the overflow loads saves money

- Efficient boom over the front and dolly configuration transport proposals for all markets
- Only two overflow loads to get all counterweights and attachment to the job



Simplified fly erection

- Efficient one-man operation
- Limited ladder climbs
- Reduced exposure to work-at-height

"CDS" Counterweight Detection System

- Pulse 2.0 automatically detects the amount of counterweight and selects the appropriate configuration.
- PULSE 2.0 prompts the operator to verify the selected counterweight configuration.
- Discrepancies between operator selection and PULSE 2.0 detection result in configuration mismatch on the RCL.



Contact your local
Columbus Equipment Company
representative about
a 175|AT today!

Link-Belt

CRANES

Lexington, Kentucky, USA | www.linkbelt.com



Link-Belt Cranes

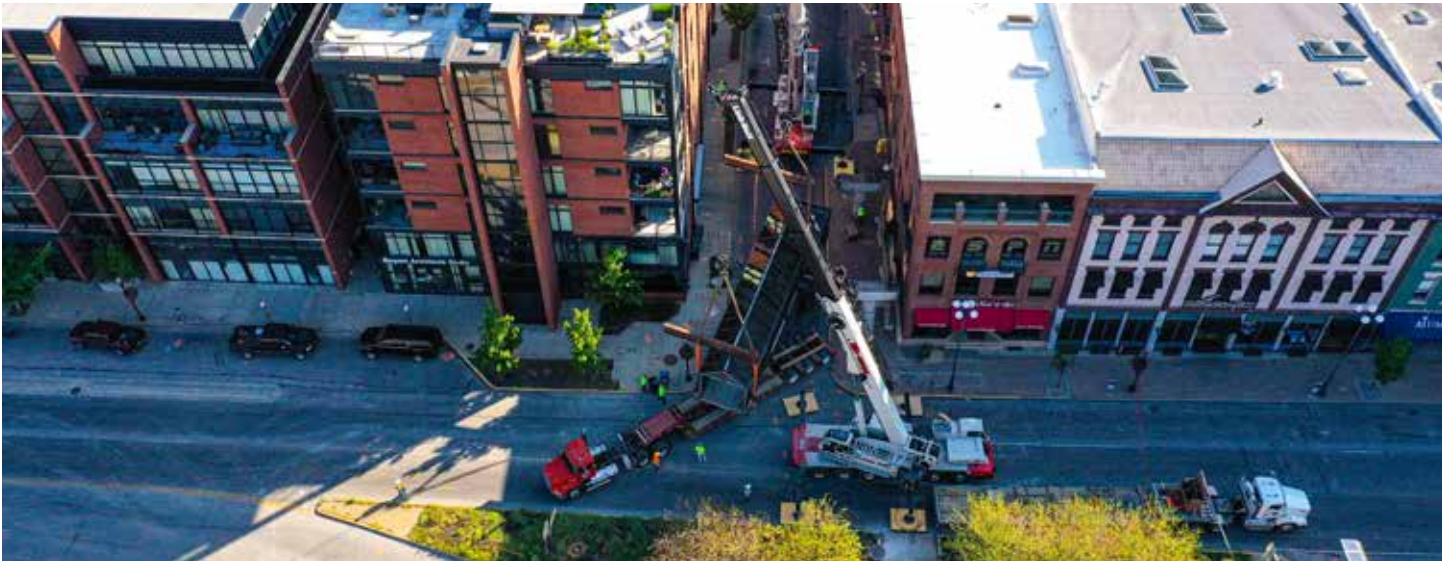


Like us on
Facebook

Link-Belt Cranes



@LinkBeltCranes



Two D-Crane Rental machines lift the last sections of a pedestrian walkway connecting Victorian Square to the Lexington Convention Center in downtown Lexington, Kentucky. The sections weigh 80,000 lbs. and were placed by a Link-Belt ATC-3210 and a Link-Belt HTC-3140.

Cincinnati and Lexington.”

The company does a lot of cell tower work, and the all-terrain capabilities of the 3210 are unbeatable for those jobs, he added. “The all-terrain technology helps us to get into tight spaces with crab steering, and it goes up hills and steep grades. The 3210 is an excellent addition for what we do.”

D-Crane purchased a Link-Belt HTC-8650 in 2017, using the 50-ton truck crane to replace an older 40-tonner of a different brand. “The 8650 is a solid machine all around. It’s easy to take out, it goes together fast, and it’s very operator friendly,” Domaschko said.

A year earlier, the company purchased an ATC-3140, which he praises for ease of travel, a long main boom with similar advantages to the 3210, and a strong chart. “The 3140 gives us an advantage when other companies have to quote something larger,” he noted.

D-Crane used to purchase a competing brand, but they’ve become complete Link-Belt converts in the past 7 or 8 years. They became interested in Link-Belt because the manufacturing facility isn’t far from their offices, and a growing relationship with Link-Belt and Columbus Equipment Company sealed the partnership. “We’ve developed a very good relationship with Columbus Equipment Company in Cincinnati and the people at Link-Belt. Both of them go the extra mile for us,” Domaschko said.

“The thing we like most about Columbus Equipment Company is they are always willing to help. They always answer the phone. Whether we call late on weekdays or Saturdays, our salesman [Roger Reese] and service technician [Mark Kennedy] are always there for us.”

While D-Crane has an in-house mechanic, “with 16 cranes and about as many trucks, we use Columbus

Equipment Company a couple times a month to help get us through some issues.”

D-Crane has grown dramatically since Domaschko’s father, Rob Sr., started the company in 2003. From its one-man, one-crane roots, the company now has more than 20 employees and a string of loyal customers.

Rob Jr. believes the company’s excellent customer service and modern equipment like the Link-Belts result in repeat customers.

Recently, D-Crane helped with an inspection of the Diocese of Covington’s 100-year-old stone building, which is cracking. For two days, a couple of inspectors rode up and down the building in a basket on the ATC-3210, inspecting the building’s stonework and cracks from all angles.

Only one set-up area was available. “With 270 feet of boom, we hoisted the personnel all the way around the building, and a lot of it was done blind by radio,” Domaschko explained. “Having that new equipment gave the personnel in the man-basket a lot of confidence, along with our excellent operator. They had an excellent ride.”

Because of its recent growth, D-Crane is building a new facility around the corner from its current shop. The 7-acre location “will give us the room that we really need.”

Additionally, the new facility has frontage on I-75, giving the company added exposure that could accelerate growth, he said. Domaschko plans have the new Link-Belt cranes highly visible to people driving by.

“Customers that used us several years ago might not be aware of our growth. They may not know we have the equipment that we do now. They’ll drive by and see it, and that’s going to go a long way for us,” he predicted. If the company’s past growth trajectory is any indicator for the future, Domaschko’s prediction may well prove prophetic. ■



Link-Belt was born because our founding father understood the importance of replacement parts.

William Dana Ewart

Building on that principal, 140 years later...

- Trained technical specialists
- Faster and more efficient customer service
- State of the art computer information systems
- 24 hours a day, 7 days a week
- 72,000 Sq. Ft. Parts Distribution Center
- All parts in stock ship the same business day



Link-Belt
CRANES
GENUINE
PARTS



*Contact your local Columbus Equipment Company
representative about Link-Belt Genuine Parts today!*

Link-Belt Cranes at CONEXPO 2020: A YEAR LIKE NO OTHER



CONEXPO 2020 attendance was reported to be strong, despite the global health concerns that occurred back in March, 2020. According to AEM, registrants for the show totaled over 130,000 attendees who walked the record 2.7 million-plus net square feet of exhibits featuring 2,300-plus exhibitors. Cancellations from international attendees totaled less than 1 percent.

Link-Belt Cranes continues its strategy of growth and investment with new products and countless features that make getting into and out of a job site quicker and easier for customers.

Link-Belt Cranes' booth number F5211 at CONEXPO 2020 in Las Vegas, Nevada displayed recent additions to Link-Belt's rough terrain lineup—the 100-ton 100|RT and 120-ton 120|RT—along with the highly successful and market leading 110-ton HTC-86110 telescopic truck crane. Following extensive endurance, road, field-testing and the first shipment delivered in fourth quarter 2019, the

175-ton 175|AT made its full North American unveiling. Additionally, the 300-ton 348 Series 2 lattice crawler crane was on display.



Link-Belt SmartFly was also front and center on multiple show machines at CONEXPO 2020. SmartFly is a streamlined process for fly assembly that eliminates the need to climb a ladder to install pins and erect the fly and could be seen on the TCC-800, 100|RT, 120|RT, HTC-86110, and 175|AT.

Link-Belt's ever-evolving product line currently now includes 31 cranes grouped as telescopic crawler, rough terrain, lattice crawler, hydraulic truck, and all-terrain cranes. Link-Belt Cranes continues its strategy of growth and investment with new products and countless features that make getting into and out of a job site quicker and easier for customers. ■

LINK-BELT WINTER SERVICE SPECIAL!



Lock-In 10% Off All Parts Today With A Crane Inspection

Offer valid through 03/31/21

Manage Peak-Season Downtime and Save Today!

The winter slowdown is an excellent time to get equipment ready for the meat of the 2021 season. A qualified inspection—that meets OSHA standards—provides a list of recommended repairs or adjustments that can either be performed in-house or by Columbus Equipment Company (parts and labor estimates available). A good inspection/maintenance program is a vital investment to extend the life of the machine and provide higher levels of productivity and reliability.

Take advantage of 10% off all Link-Belt "Prime Time", Hirschmann and Lube-A-Boom parts by contacting your local branch today! Enjoy greater productivity and less downtime frustrations next season.



Ohio's Dependable Dealer

COLUMBUS
(614) 443-6541

TOLEDO
(419) 872-7101

CINCINNATI
(513) 771-3922

RICHFIELD
(330) 659-6681

CADIZ
(740) 942-8871

DAYTON
(937) 879-3154

MASSILLON
(330) 833-2420

ZANESVILLE
(740) 455-4036

PIKETON
(740) 289-3757

www.columbusequipment.com





\$725,000

2017 Link-Belt Model TCC-750 Telescopic Crawler Crane

- 75 Ton
- S/N-R8K7-5455
- 1,700 hours
- 38' to 115' full power, (4) section, Formed Boom with Quick Reeve Head machinery
- 35' to 58' offsettable and stowable, bi-fold Lattice Fly.
- 60-ton, 4 Sheave, Quick Reeve Hook Block with safety latch. (1,109 lbs.)
- 8.5-ton, Swiveling Hook Ball with safety latch.



\$350,000

2012 Link-Belt RTC-8065 SII Rough Terrain Crane

- S/N-J9K2-2507
- 4,900 hours
- 38' to 115' Four (4) Section, Full Power Boom with 4 Sheave Boom Head
- 35' to 58', 2 piece, offsettable, and stowable, Bi-Fold Lattice Fly
- Cat C6.6 series, 6-Cylinder Diesel Engine with 12-volt starting and charging and 120-volt block heater
- 60-ton Hook Block
- 8.5-ton Headache Ball



\$310,000

2012 Link-Belt RTC-8050 SII Rough Terrain Crane

- S/N-J6K2-2832
- 3,500 hours
- 35' 6" to 110' Four (4) Section "BOSS" Full Power Boom with 4 Sheave Head
- 28.5 ft, 1 piece, offsettable Lattice Fly
- Cat C6.6 Series, 6 Cylinder Diesel Engine with 12-volt starting and charging and 120-volt block heater
- 40-ton, 4 Sheave Hook Block
- 8.5-ton Headache Ball with Swivel

Looking to Buy or Sell A Link-Belt Crane?

CALL YOUR LOCAL COLUMBUS EQUIPMENT COMPANY REPRESENTATIVE TODAY.



\$225,000

2014 Link-Belt RTC-8030 SII Rough Terrain Crane

- S/N-E8K4-4166
- 1,900 hours
- 29' to 91', Four (4) Section "BOSS" Full Power Boom with 4 Sheave Head
- 27' to 44', 2 Piece, offsettable, and stowable Bi-Fold Lattice Fly
- Caterpillar C6.6 liter diesel with 164 horsepower, 12-volt start / 12-volt charging and 120-volt block heater.
- 30-ton, 3 Sheave Hook Block
- 8.5-ton Headache Ball with Swivel



\$395,000

2014 Link-Belt TCC-500 Telescopic Crawler Crane

- S/N-S5K4-4310
- 5,350 hours
- 35' to 110' Four (4) Section, Full Power Boom with 4 Sheave Boom Head
- 35' to 58', 2 piece, offsettable, and stowable, Bi-Fold Lattice Fly
- Cummins QSB, 6 Cylinder, Tier 4i Diesel Engine, 12-volt starting and charging and 150-amp Alternator
- 40-ton Hook Block
- 8.5-ton Headache Ball



\$330,000

2013 Link-Belt RTC-8050 Series II Rough Terrain Crane

- S/N- J6K3-3544
- 5,300 hours
- 35' 6" to 110' Four (4) Section "BOSS" Full Power Boom with 4 Sheave Head
- 28.5' to 51' 2 Piece, Bi-Fold Lattice Fly
- Cat C6.6 Series, 6 Cylinder Diesel Engine with 12-volt starting and charging and 120-volt block heater
- 40-ton, 4 Sheave Hook Block
- 8.5-ton Headache Ball with Swivel

For a Complete List of Used Equipment, Please Visit www.columbusequipment.com
 UP TO 6-MONTH POWER TRAIN WARRANTY STANDARD ON ALL REMARKETING CERTIFIED MACHINES!



Ohio's Dependable Dealer

© 2021 Mediaworks Marketing, Inc.

Ohio's Authorized Link-Belt Dealer



VISIT US AT:



Statewide Coverage From The Following Locations:

COLUMBUS
(614) 443-6541

TOLEDO
(419) 872-7101

CINCINNATI
(513) 771-3922

RICHFIELD
(330) 659-6681

CADIZ
(740) 942-8871

DAYTON
(937) 879-3154

MASSILLON
(330) 833-2420

ZANESVILLE
(740) 455-4036

PIKETON
(740) 289-3757

Return Address: 2323 Performance Way, Columbus, OH 43207
www.columbusequipment.com